

United Kingdom

1. Mohammed said Alshibli

2. Abdulla Abdulziz

3. Abdullah Amer

4. Sultan Khaled



Questions :

* Population

* Sports

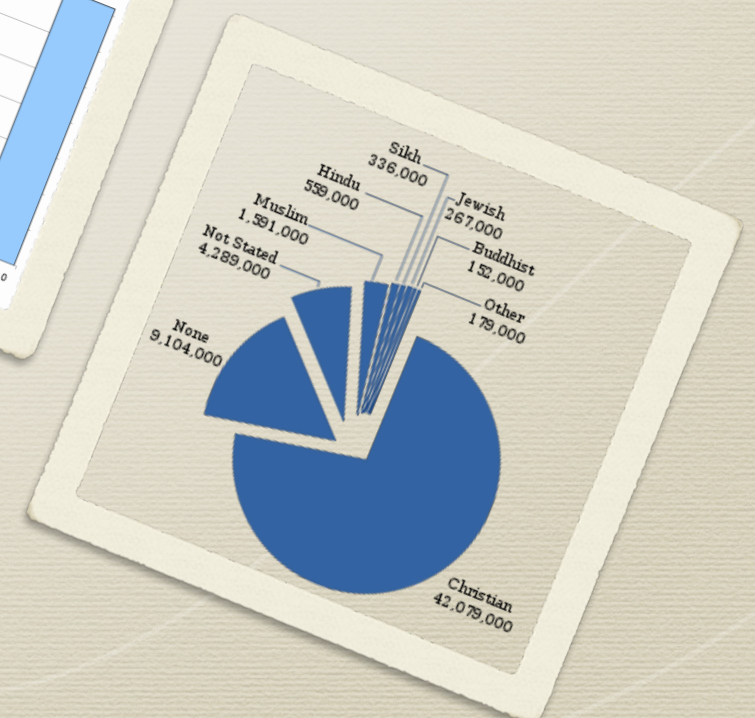
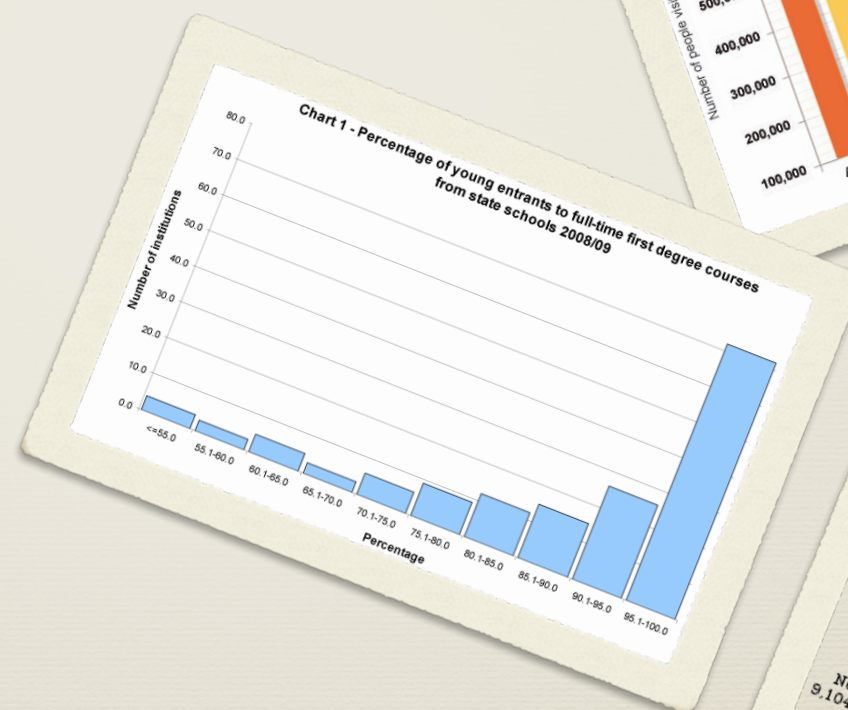
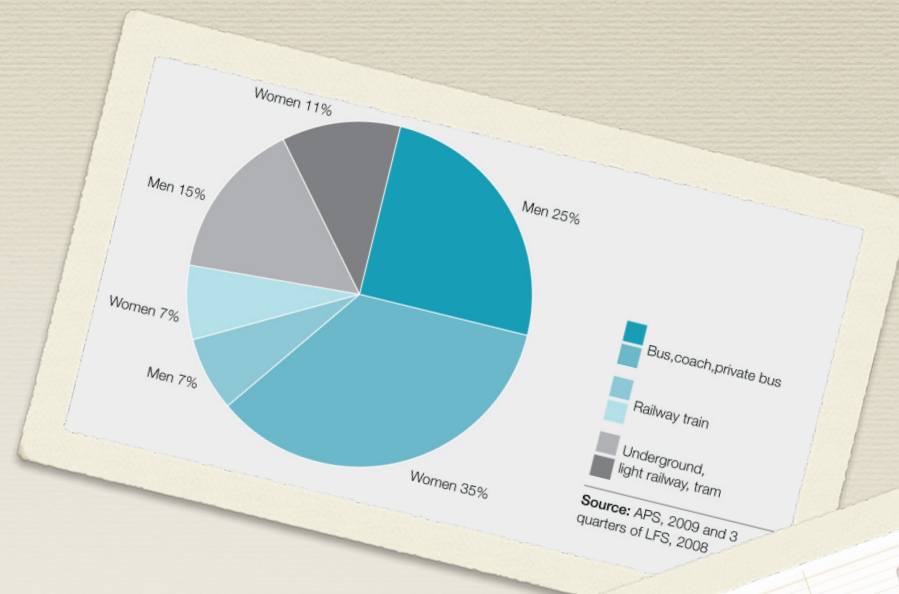
* Religions

* Tourism

* Education

* The official events

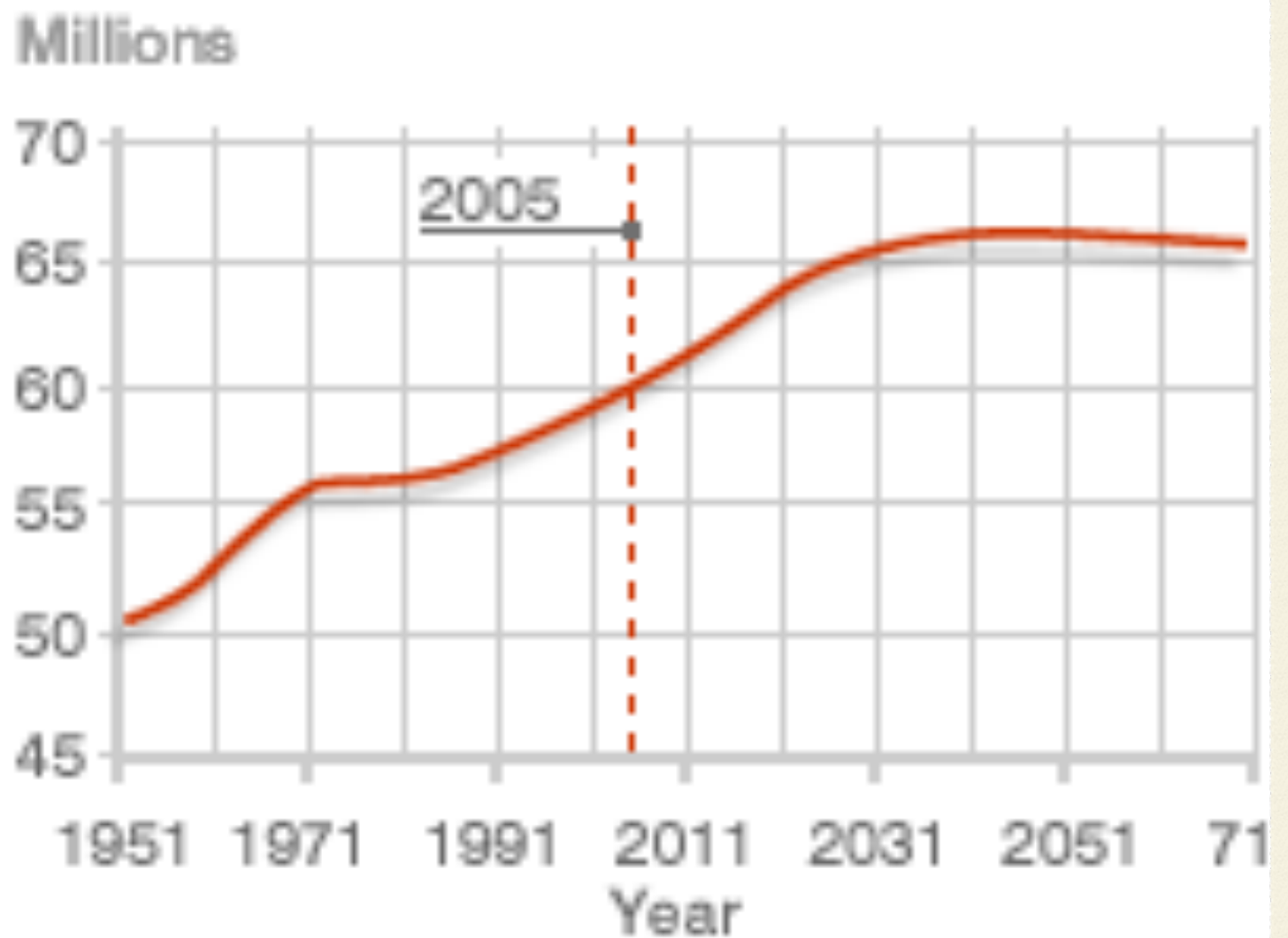
* Transportation



Population

The UK population increased by 7.0 per cent since 1971, from 55.9 million. Growth has been faster in more recent years partly

In mid-2005 the UK was home to 60.2 million people, of which 50.4 million lived in England



SOURCE: Office of National Statistics

Sport

* The most popular sport game in the Uk is football .

It has been the most popular sport in the United Kingdom since the 1860s

The second figure is about a tournament in Europe between European teams.

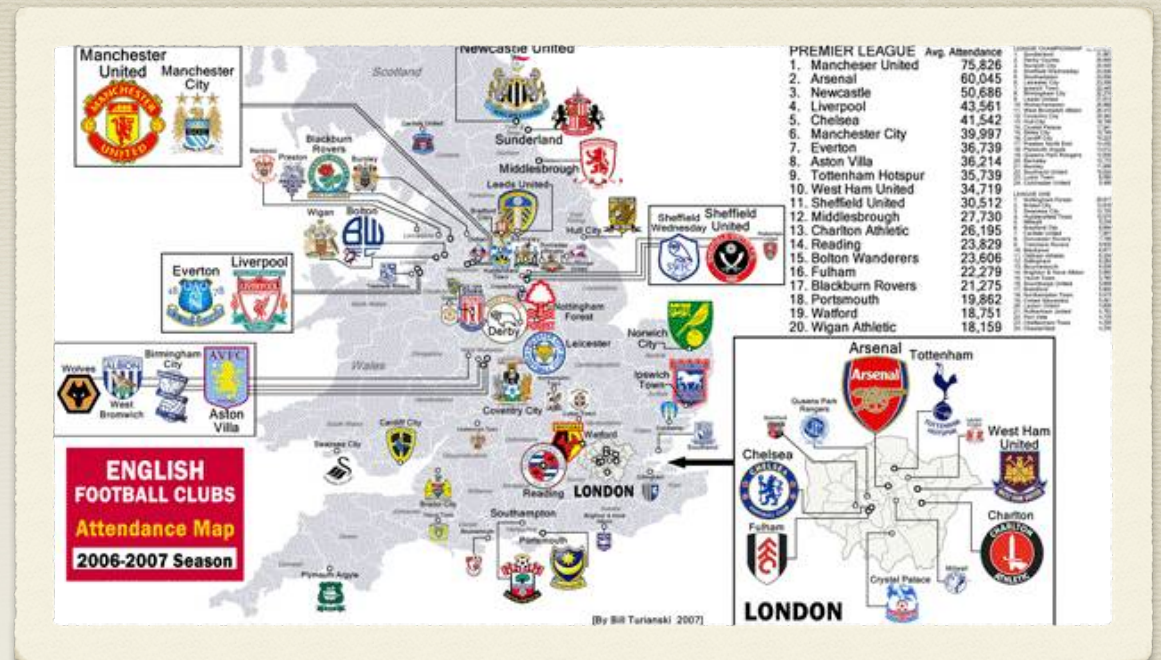
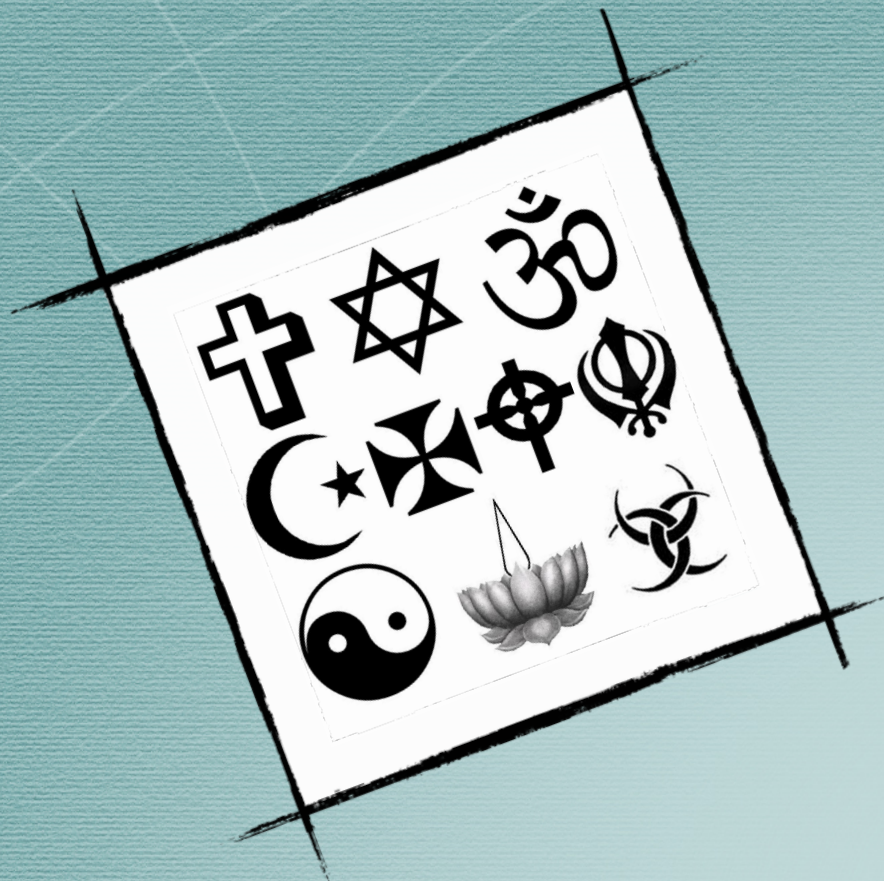


Figure 1



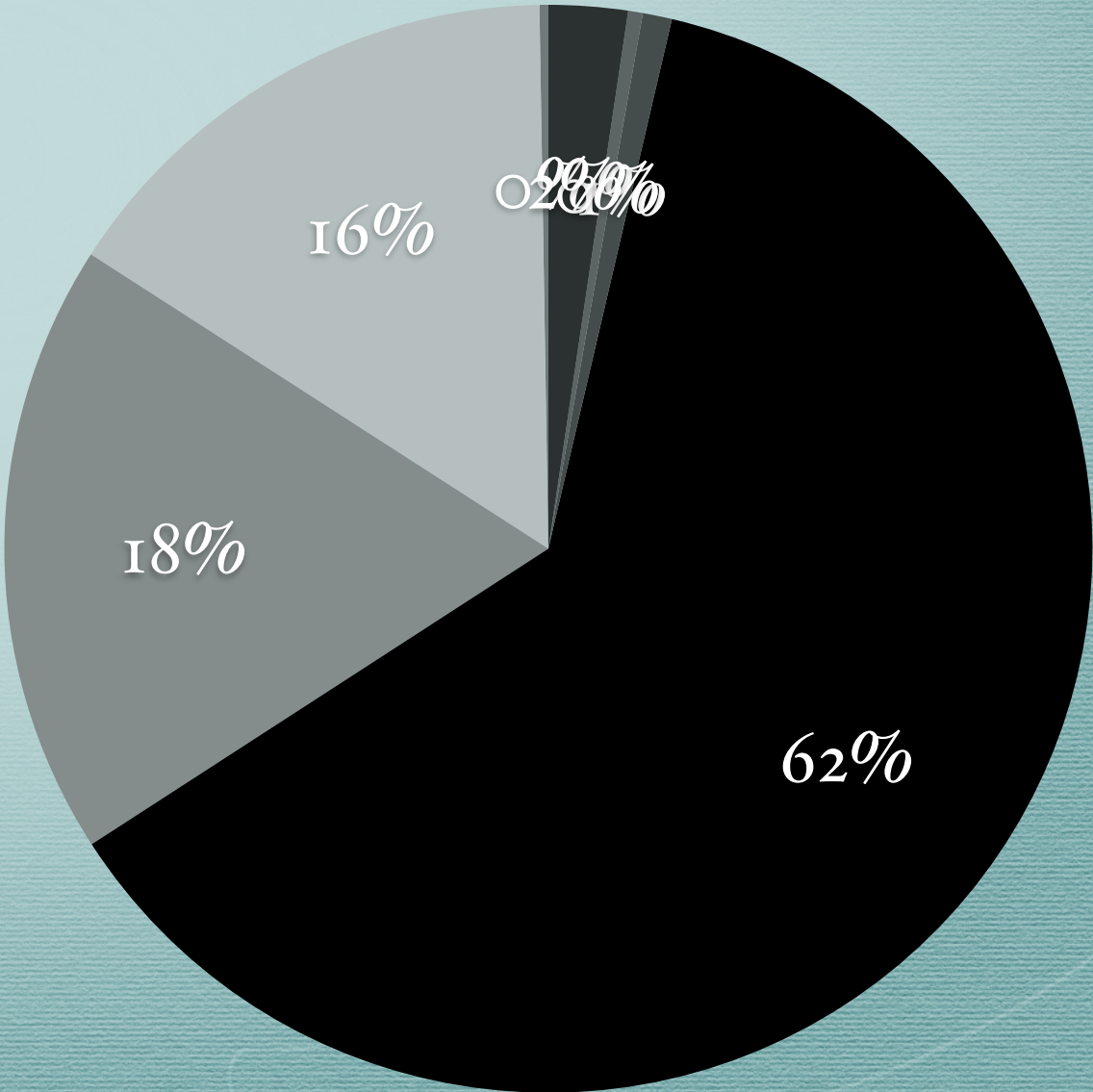
Figure 2



	Thousands	%
Christian	42079	71.6
Buddhist	152	0.3
Hindu	559	1.0
Jewish	267	0.5
Muslim	1591	2.7
Sikh	336	0.6
Other religion	179	0.3
<i>All religions</i>	<i>45163</i>	<i>76.8</i>
No religion	9104	15.5
Not stated	4289	7.3
<i>All no religion/not stated¹</i>	<i>13626</i>	<i>23.2</i>
<i>Base</i>	<i>58789</i>	<i>100</i>

Religions

The Christianity is the most religion which got followers more than other religions 62%

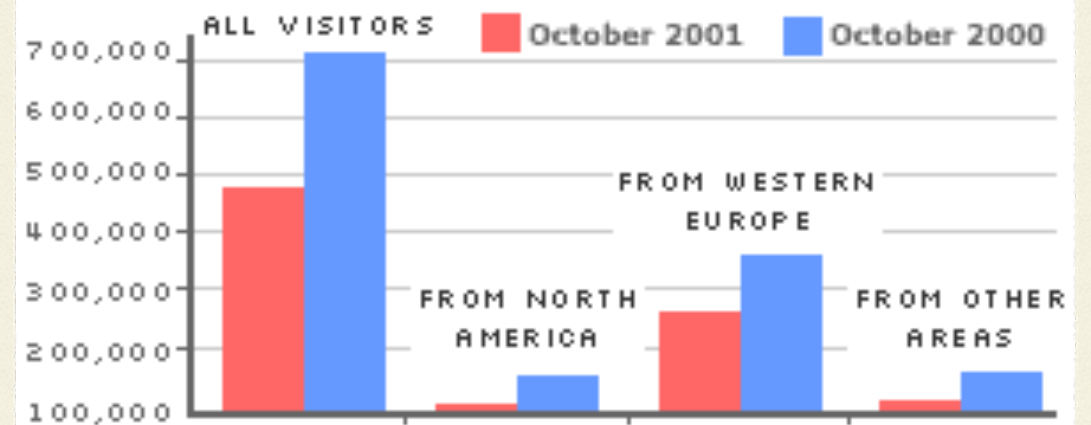


Tourism



- * A sharp fall in visitor numbers from overseas was accompanied by a growing taste for foreign holidays by the British people.

Overseas visitors to the UK



SOURCE: Office for National Statistics

In October 2001, the number of arrivals for holiday visits was a seasonally adjusted 554,000 - 30% lower than in the previous month and 31% down year on year

Map of tourism organization

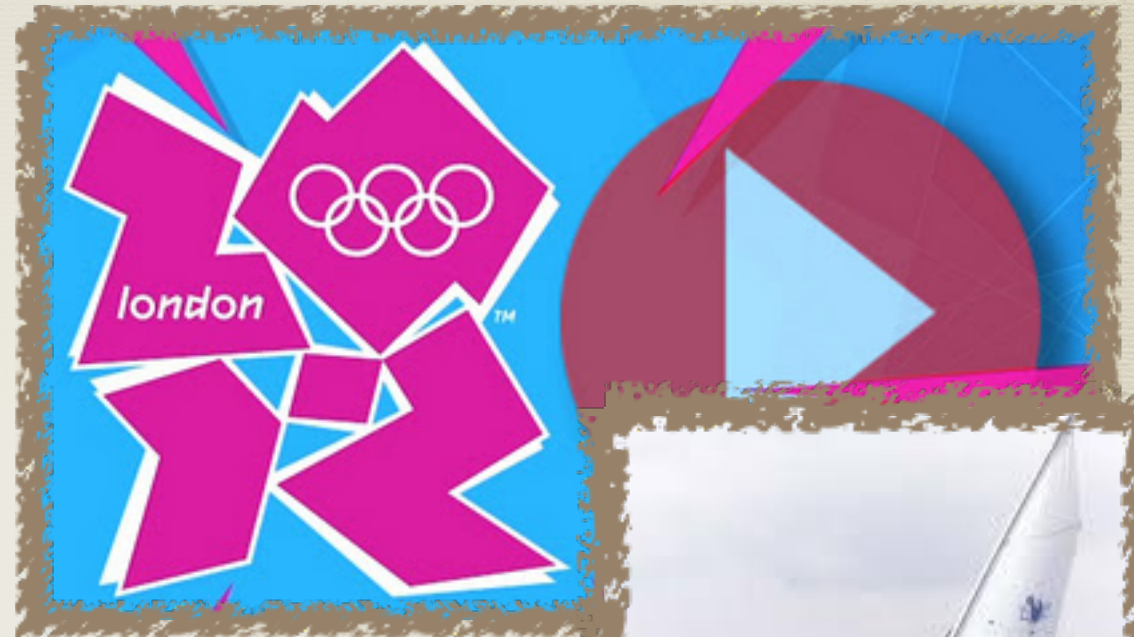
Education

Education in England is overseen by the Department for Education and the Department for Business, Innovation and Skills. Local authorities (LAs) take responsibility for implementing policy for public education and state schools at a regional level. The education system is divided into nursery (ages 3–4), primary education (ages 4–11), secondary education (ages 11–18) and tertiary education (ages 18+).



The official events

- * The London Prepares series combined ticketed events with several free-to-watch events, including the cycling road race in London and Surrey and the marathon swimming at Hyde Park. This enabled hundreds of thousands of spectators to see world-class sporting action ahead of the London 2012 Games



Transportation

- * The rail network in Britain is one of the most extensive in Europe with over 11,000 miles (17,500km) of lines, some 2,500 stations and around 1,500 trains a day.

